
Project :

File : ... \Cyklostezka.lpf

Summary

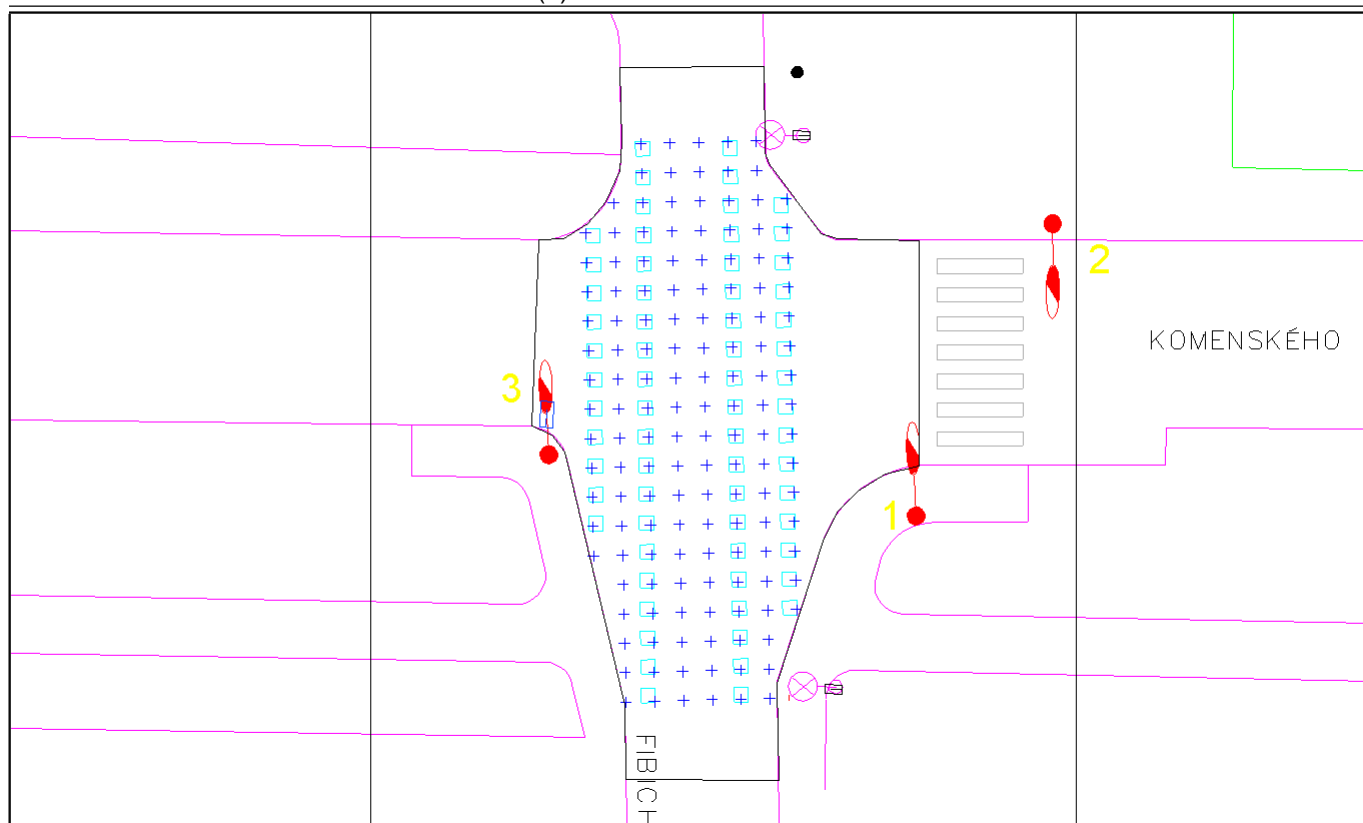
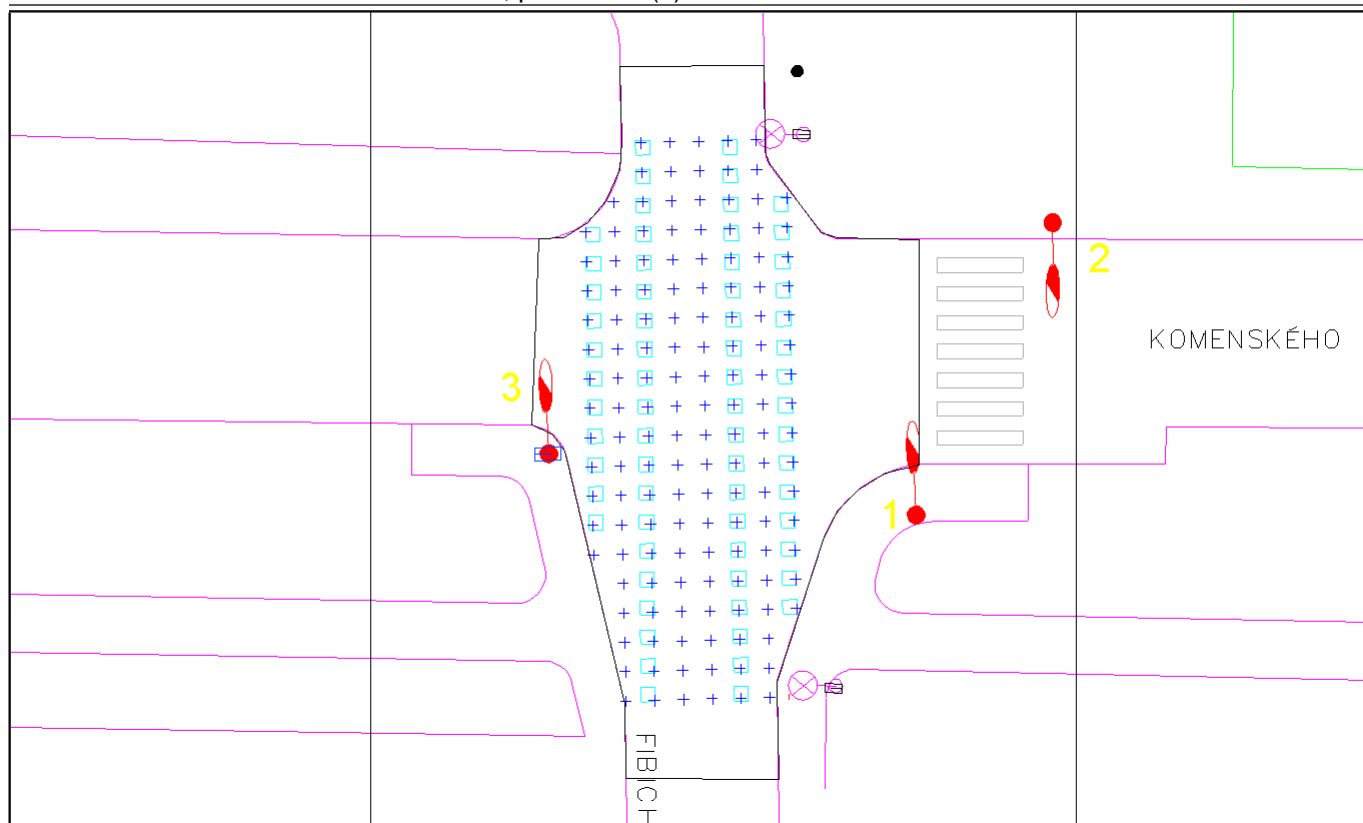
Grid summary

Average type : Arithmetic (A) or Weighted (W)

- **Oblast cyklostezek (1)**

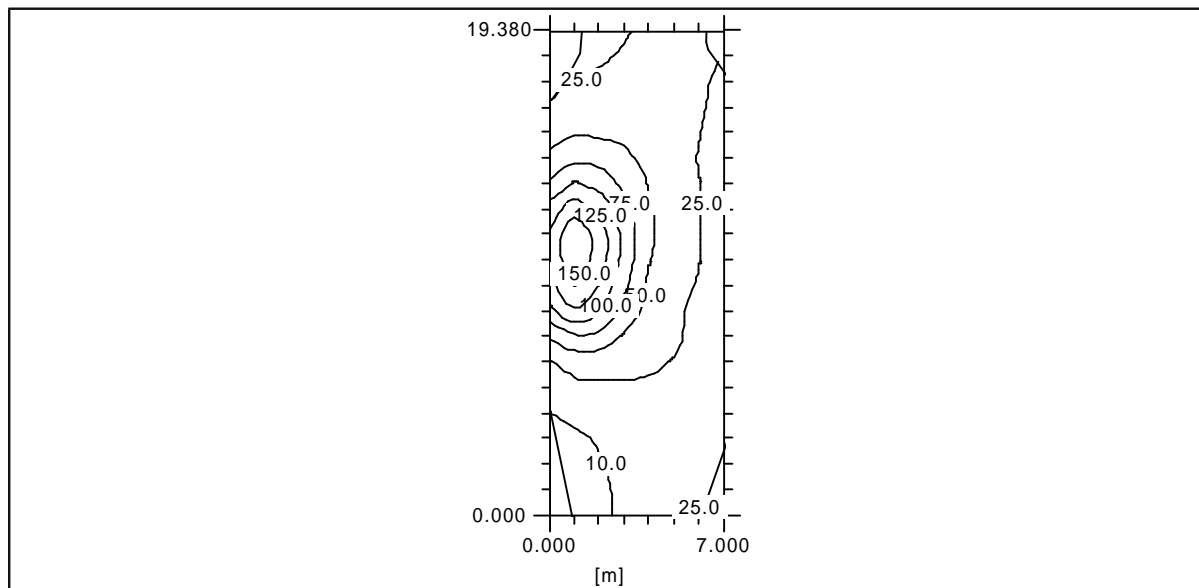
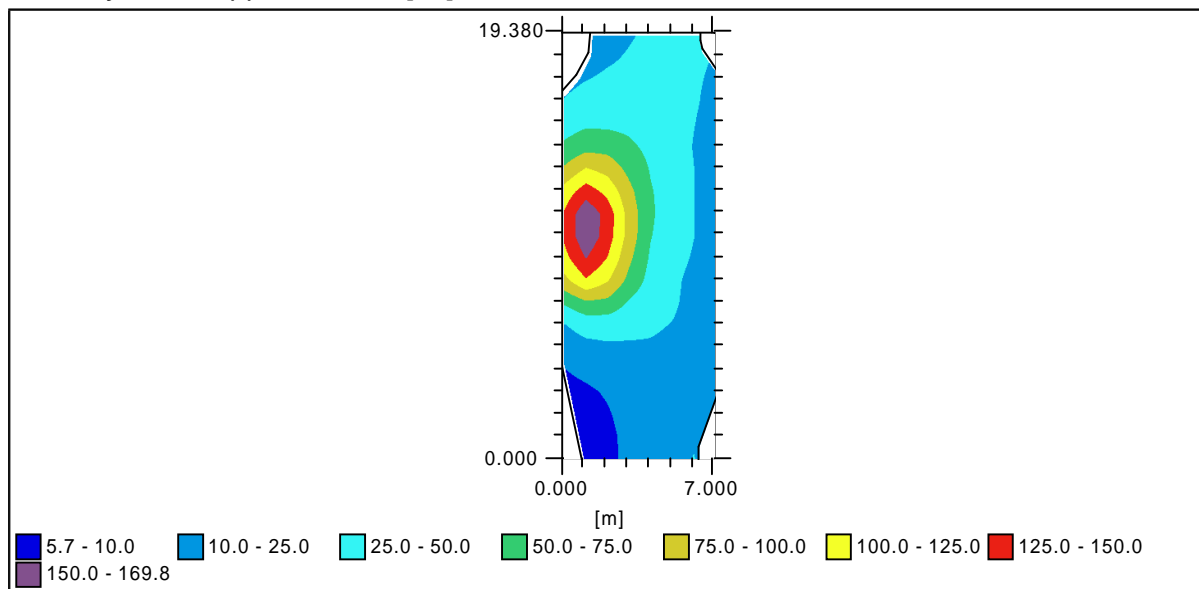
Illuminance (lux)

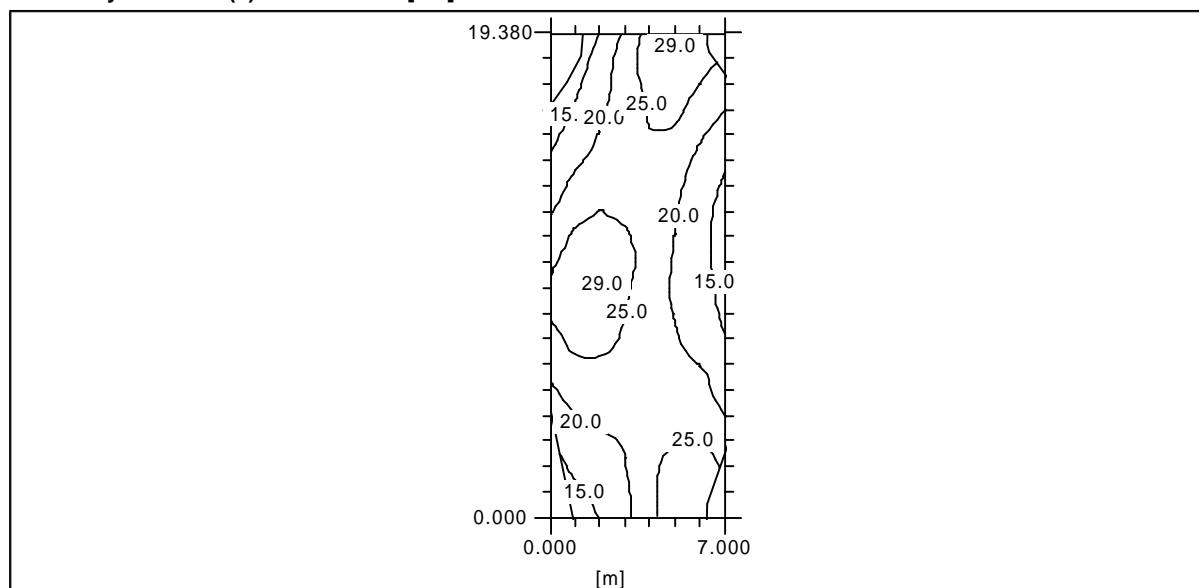
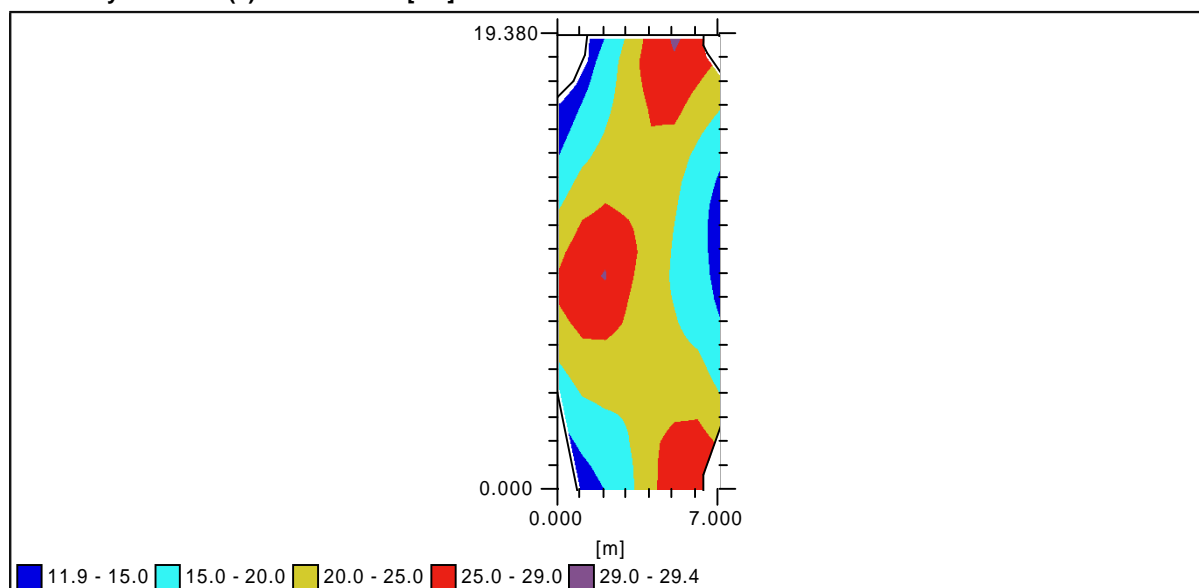
Configuration	Min	Max	Ave (A)	Min/Max	Min/Ave
Varianta s MC2 ZEBRA (1)	5,7	169,8	41,5	3,4	13,8
Varianta s Z1 Sidoina, pootocená (2)	11,9	29,4	21,6	40,5	55,2

Current view Varianta s MC2 ZEBRA (1)**Current view** Varianta s Z1 Sidoina, pootocená (2)

Grid results

Average type : Arithmetic (A) or Weighted (W)

Varianta s MC2 ZEBRA (1)**Oblast cyklostezek (1) : Illuminance [lux]****Oblast cyklostezek (1) : Illuminance [lux]**

Varianta s Z1 Sidoina, pootocená (2)**Oblast cyklostezek (1) : Illuminance [lux]****Oblast cyklostezek (1) : Illuminance [lux]**

General information

Configuration details

• Varianta s MC2 ZEBRA (1)

Activated ☒

Matrix	Description	Flux	MF	Luminaire
974164	C:\Matrices\974164.mat	6,6	0,84	No Picture
MC 2 ZEBRA_150 W_pravost nna	C:\Matrices\Matrice_transponované\EULUMMC2_ZEBRA\MC 2 ZEBRA_150W_pravostranna.ltd	13,0	0,80	No Picture

Group details

Single								
N°	Start			Luminaire				
	X	Y	H	Matrix	Az	Inc	Rot	
✓ 1	-6,300	11,444	6,000	974164	271,0	0,0	0,0	
✓ 2	-5,183	-7,800	6,000	974164	272,0	0,0	0,0	
✓ 3	-15,057	1,894	6,000	MC 2	1,7	0,0	0,0	

• Varianta s Z1 Sidoina, pootocená (2)

Activated ☒

Matrix	Description	Flux	MF	Luminaire
974164	C:\Matrices\974164.mat	6,6	0,84	No Picture

Group details

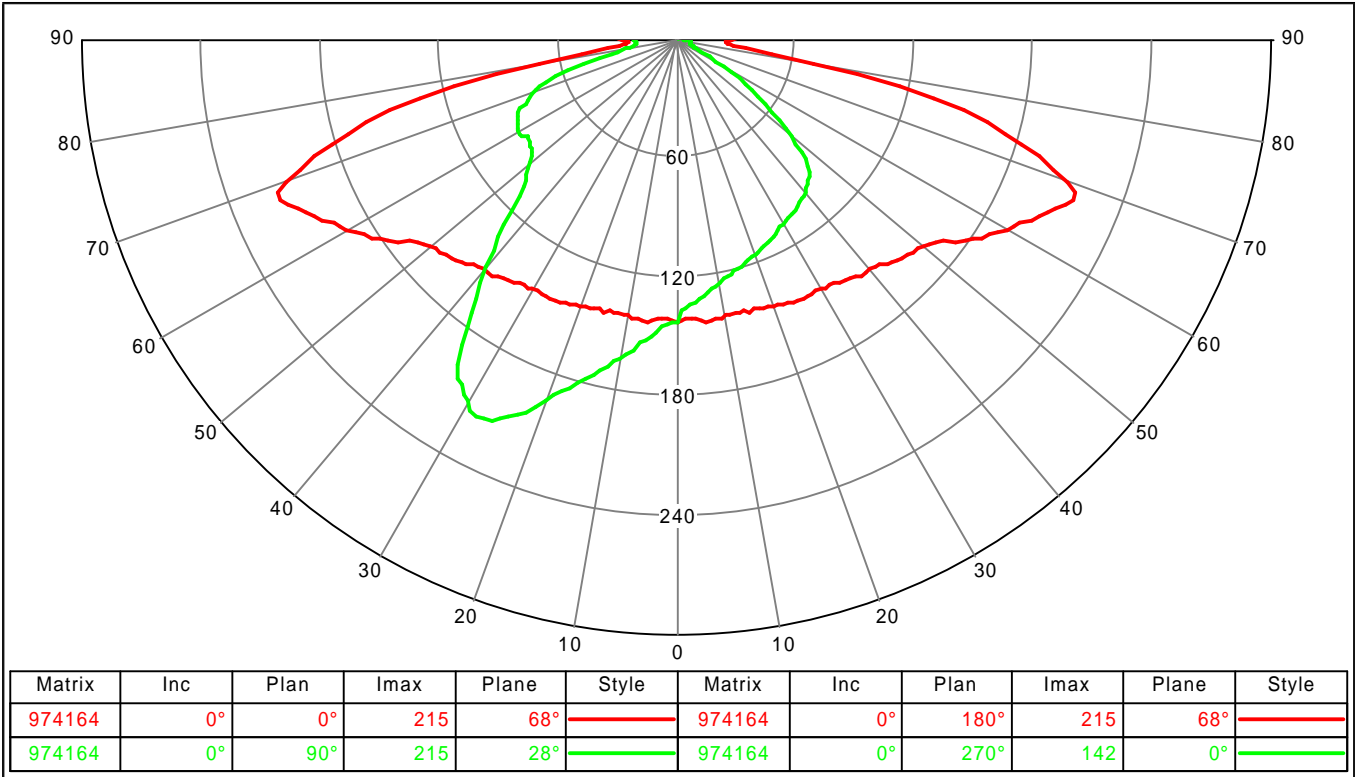
Single								
N°	Start			Luminaire				
	X	Y	H	Matrix	Az	Inc	Rot	
✓ 1	-6,300	11,444	6,000	974164	271,0	0,0	0,0	
✓ 2	-5,183	-7,800	6,000	974164	272,0	0,0	0,0	
✓ 3	-14,877	0,345	6,000	974164	88,9	0,0	0,0	

Photometric documents

974164

C:\Matrices\974164.mat

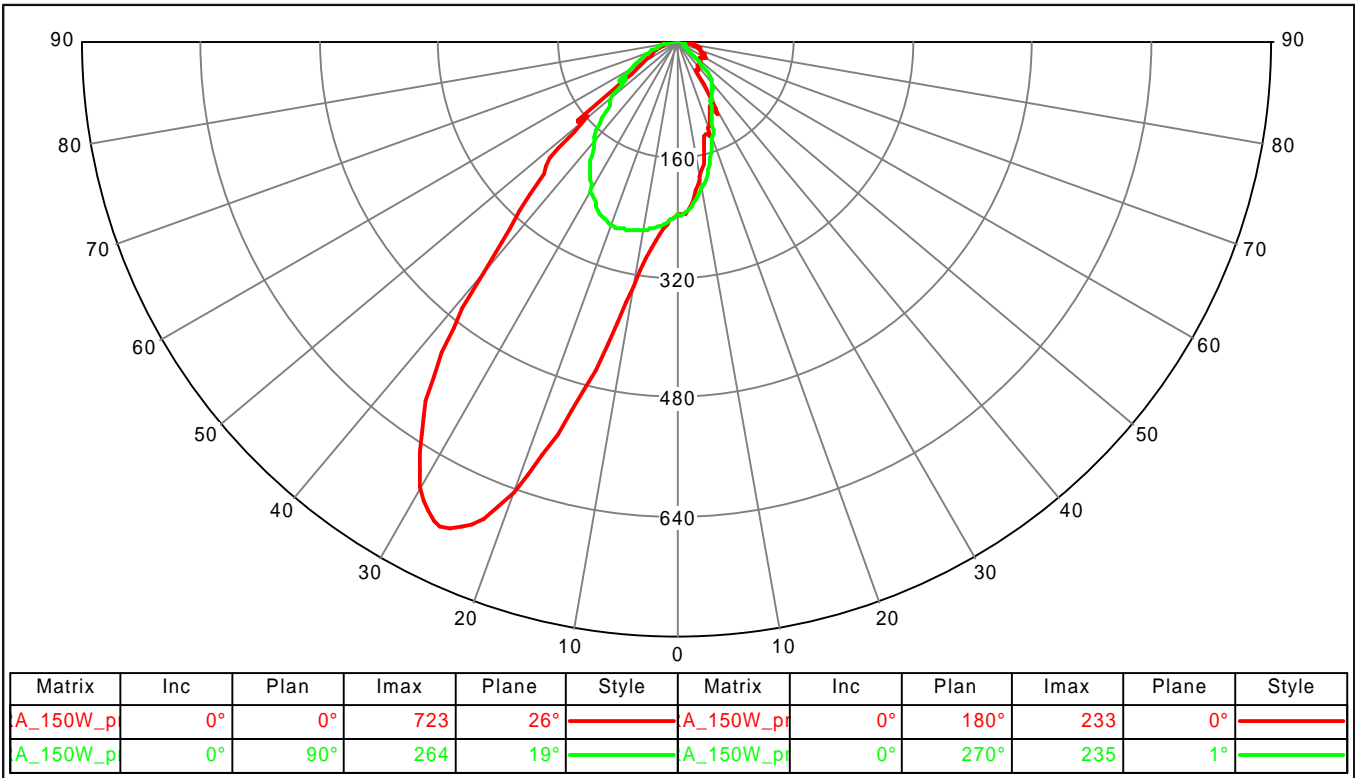
Polar / Cartesian diagram



MC 2

C:\Matrices\Matrice_transponované\EULUM\MC2_ZEBRA\MC 2 ZEBRA_150W_pravostranna.ldt

Polar / Cartesian diagram



Utilization curve

